

Sustainability data: turning the tide

March 2023

allianzgi.com



Thomas Roulland
Head of
Sustainability
Methodologies and
Analytics

A strong proprietary ESG¹ data architecture is the cornerstone in understanding and aligning sustainable outcomes alongside financial returns. The challenge is to turn the mass of available sustainability data into insights that make an actionable difference.

Recent years have witnessed significant growth and change around the topic of environmental, social and governance (ESG) investing within the asset management industry. Rising investor interest has combined with evolving regulatory perspectives on ESG integration and a forced rethink of sustainability investing in the wake of the pandemic and geopolitical shocks. But the industry has yet to address the best way to handle the availability and application of sustainability data.

Without a dedicated and thoughtful approach to ESG data management, we think asset managers risk being overwhelmed. At Allianz Global Investors, we have a team dedicated to guiding investors through the current deluge of sustainability data including scores, ratings, key performance indicators (KPIs) and controversies – now that effective ESG data management has become a strategic necessity.

Everything everywhere all at once

The growth in ESG disclosures in recent decades has been dramatic and now reached a point where most of the world's largest companies report on sustainability (see Chart 1). This shift has been driven primarily by two factors: investor interest and regulation.

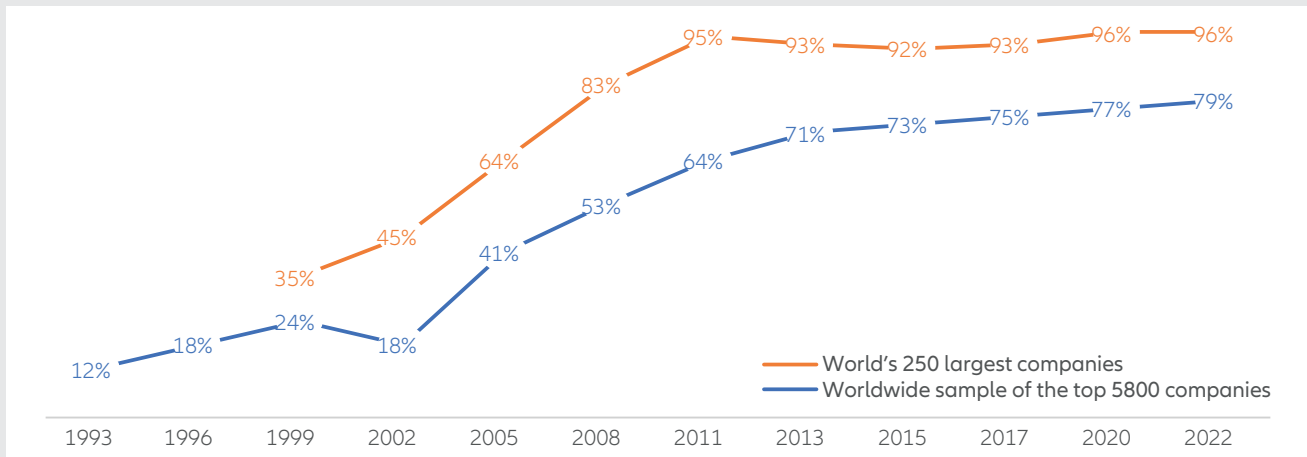
Companies have been able to address investor interest in sustainability or corporate

Key takeaways

- Integrating non-financial factors into investment decisions is increasingly mainstream, but the choice and style of integration is still evolving.
- We think a dedicated ESG data strategy is critical for global asset managers to meet current and future data, portfolio scoping and reporting needs.
- Our dedicated Sustainability Methodologies and Analytics team strategically addresses the challenges of data selection, aggregation and implementation across public and private asset classes.
- Our new Sustainability Insights Engine – or SusIE – is a proprietary data tool to enhance understanding of ESG data.

social responsibility (CSR) reporting through frameworks provided by industry bodies like the Carbon Disclosure Project², the Global Reporting Initiative³ or the Sustainability Accounting Standards Board.⁴ These organisations have promoted and provided guidance on the most material ESG topics for public disclosure by corporations.

Exhibit 1: Global sustainability reporting rates, 1993-2022



Source: KPMG International⁵

The second and perhaps more visible driver has been the recent wave of regulatory initiatives hitting the capital markets. At continental and national levels, regulators have presented varying requirements for the disclosure of sustainability information from corporates. An example is the European Commission’s Principal Adverse Impact (PAI) framework, which requires specific indicators and methodologies to allow comparative analysis on potentially harmful investments.⁶ We anticipate this regulatory evolution to continue, especially outside Continental Europe.

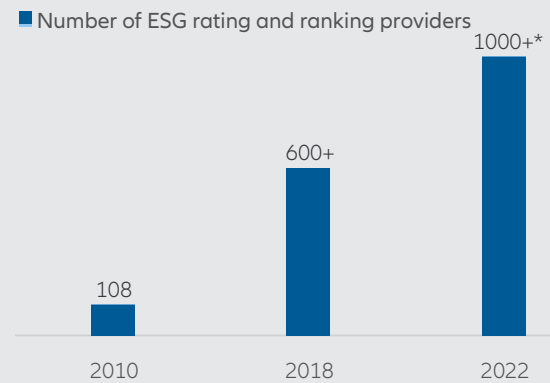
We expect the company coverage and extent of ESG disclosures to expand significantly in the coming years. For example, climate reporting is expanding from Scope 1 and 2 emissions to a far wider scope of factors including Scope 3⁷, methane, carbon offsets and even governance. The expanded disclosures will help on quantifying topics like net zero, taxonomy alignment and sustainable investment share⁸. As more information is presented, all stakeholders will have to refine and adapt to ensure they are not paralysed by unhelpful analysis.

Too much of a good thing?

Investors are already struggling with the current scale of sustainability data, which is not necessarily helped by the multiplication of sources and methodologies – we expect both to escalate exponentially in the coming years. The main challenge derives from the population of data from ever-expanding and unregulated data providers that we estimate has exceeded a thousand now (see Chart 2). This translates into different standards on data capture, interpretation, methodology and delivery populating varying outputs for risk, sustainability, impact or controversy measures.

We are now able to measure our frustration at this complexity and lack of uniformity. While the correlations of outputs from the more mature financial credit ratings providers are at least 94%⁹, the ratings from the large ESG data providers exhibit lower and more disparate correlation – as highlighted by the CFA Institute in 2021 (see Chart 3).

Exhibit 2: Growth of ESG ratings and rankings providers



Source: Allianz Global Investors. * projected figure.

Exhibit 3: Correlation of ESG ratings (%)

	MSCI	S&P	Sustain- analytics	CDP	ISS	Bloom- berg
MSCI		35.7	35.1	16.3	33.0	37.4
S&P	35.7		64.5	35.0	13.9	74.4
Sustainalytics	35.1	64.5		29.3	21.7	58.4
CDP	16.3	35.0	29.3		7.0	44.1
ISS	33.0	13.9	21.7	7.0		21.3
Bloomberg	37.4	74.4	58.4	44.1	21.3	

Source: CFA Institute¹⁰

Meet SusIE – a dedicated sustainability data platform

While it took the finance industry several decades to come together on International Financial Reporting Standards, we are trying to achieve the same for non-financial standards in a fraction of the time. At AllianzGI, we believe sustainability requires a very specific and dedicated data approach to selection and aggregation.

Exhibit 4: Example ESG profile from the AllianzGI SusIE showing Company A in the insurance sector

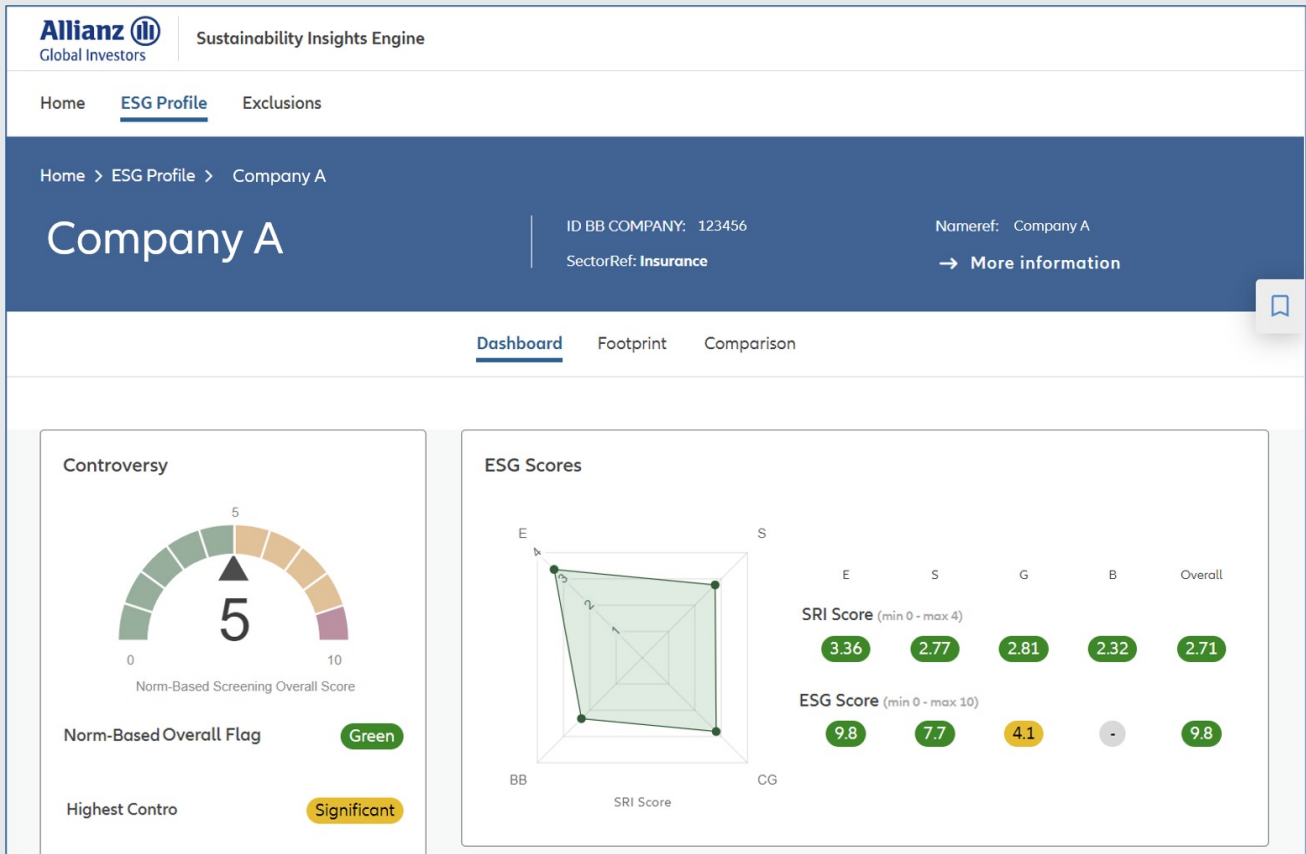


Image taken from SusIE dashboard showing ESG screening and controversy scores across several factors.

As such, we put in place the Sustainability Methodologies and Analytics team in 2021 to develop a transparent, robust, and digital architecture. Now launched, this architecture is known as SusIE or our Sustainability Insights Engine.

SusIE will support the delivery of ESG, sustainability and impact data – with accompanying perspectives and opinions – to our investment professionals. It involves a robust approach to scoping data sources, efficient aggregation of this data, and the population of this data into clear and commercial front office-facing tools. SusIE is designed to support the introduction of new data, removal of redundant data, and alignment to new client product offerings. An example is the new net zero alignment toolkit, scheduled for launch later in 2023.

How we scope data for SusIE

We value the cognitive diversity of the different approaches in the market, and this helps us avoid unintended implicit biases in model outputs. But discipline is needed in how we treat the different sources, and we separate data providers into three broad categories¹¹

- **Generalist** – these provide a full range offering of ESG services, including raw data, peer analysis, ESG scores and qualitative analysis on ESG factors.
- **Specialist** – a highly granular, specific or niche offering of data, opinions (eg, small cap, private markets) or themes (eg, biodiversity, social impact)
- **Technology** – providers using alternative data capture techniques like artificial intelligence or natural language processing to offer a new range of services and analytics. These can include forward-looking measures, fuller coverage of investable universes, news flow screens and truly independent raw data sets.

Positioned for an ESG technology-powered future

The one constant in any form of technology is change and we are readying ourselves for this. We currently identify three likely important elements of any evolution of data and how they can be embedded in a robust and resilient ESG data strategy:

1. **Evolving data capture** away from current reliance on purchased data. New technologies will allow for more alternative and independent sources, capturing more perspectives. A likely future hybrid model will see quality raw data complemented by external expert opinions.

- 2. Powerful engines and efficient data processing** to address the volume of data. This includes cleansing, matching, computing, transforming and distributing separate sources into consistent, standardised data sets. More granular E, S and G metrics will inform investment decisions and asset allocation and meet client-reporting expectations.
- 3. Risk assessments** will benefit from new techniques. The scraping of formal reporting suites is now mainstream, but a fuller and more predictive understanding of material risks will be achieved through new technologies applied to an entity's entire value chain. A fuller measure of idiosyncratic non-financial risks will allow for investment diversification of these risks.

Nothing artificial about the intelligence outlook

In summary, the realm of ESG data is expanding swiftly in volume and complexity. Investors will expect asset managers to guide them through the integration of ESG factors into investment decisions as well as the risk and opportunity sets – at the same time as meeting challenging regulatory and reporting demands. We embrace the opportunity afforded by the scale and complexity of the data topic to demystify and guide our clients through a likely eventful period of evolution in investment approaches. A strong proprietary ESG data architecture is the cornerstone in understanding and aligning non-financial outcomes alongside financial returns.

Allianz Global Investors is a leading active asset manager with over 600 investment professionals in over 20 offices worldwide and managing EUR 506 billion in assets. We invest for the long term and seek to generate value for clients every step of the way. We do this by being active – in how we partner with clients and anticipate their changing needs, and build solutions based on capabilities across public and private markets. Our focus on protecting and enhancing our clients' assets leads naturally to a commitment to sustainability to drive positive change. Our goal is to elevate the investment experience for clients, whatever their location or objectives.

Active is: Allianz Global Investors

Data as at 31 December 2022. Total assets under management are assets or securities portfolios, valued at current market value, for which Allianz Asset Management companies are responsible vis-à-vis clients for providing discretionary investment management decisions and portfolio management, either directly or via a sub-advisor. This excludes assets for which Allianz Asset Management companies are primarily responsible for administrative services only. Assets under management are managed on behalf of third parties as well as on behalf of the Allianz Group.

Investing involves risk. The value of an investment and the income from it will fluctuate and investors may not get back the principal invested. Past

1. ESG = Environmental, Social and Governance.
2. Carbon Disclosure Project – www.cdp.net/en
3. Global Reporting Initiative – www.globalreporting.org
4. Sustainability Accounting Standard Board – www.sasb.org
5. Source: KPMG Survey of Sustainability Reporting 2022, KPMG International, September 2022. Worldwide sample of the top 5800 companies represent a worldwide sample of the top 100 companies by revenue in 58 countries or jurisdictions, 5800 companies in total. World's 250 largest companies represent the world's 250 largest companies by revenue based on the 2021 Fortune 500 ranking.
6. Another example is the EU Non-Financial Reporting Directive 2014/95/EU, as well as the proposed Corporate Sustainability Reporting Directive.
7. Scope 1,2,3 are different categories of greenhouse gas emissions, Scope 3 emissions cover those produced by customers using the company's products <https://www.weforum.org/agenda/2022/09/scope-emissions-climate-greenhouse-business/>
8. The share of a fund that is considered as sustainable according to the EU Sustainable Finance Disclosure Regulations definition.
9. Study on long-term debt ratings from Standard & Poor's, Moody's, and Fitch Ratings of 400 companies in 24 industries, Kevin Prall, "ESG 7. Ratings: Navigating Through the Haze," blog posting at CFA Institute, 10 August 2021
10. Study on ESG ratings of 400 companies in 24 industries, Kevin Prall, "ESG Ratings: Navigating Through the Haze," blog posting at CFA Institute, 10 August 2021
11. In the future, we envisage a fourth category of uncontracted or non-formal data sources, such as public sources, NGOs, general or specialist press articles or industry bodies, which could help inform or complement data sets or scores.

performance is not indicative of future performance. This is a marketing communication. It is for informational purposes only. This document does not constitute investment advice or a recommendation to buy, sell or hold any security and shall not be deemed an offer to sell or a solicitation of an offer to buy any security.

The views and opinions expressed herein, which are subject to change without notice, are those of the issuer or its affiliated companies at the time of publication. Certain data used are derived from various sources believed to be reliable, but the accuracy or completeness of the data is not guaranteed and no liability is assumed for any direct or consequential losses arising from their use. The duplication, publication, extraction or transmission of the contents, irrespective of the form, is not permitted.

This material has not been reviewed by any regulatory authorities. In mainland China, it is for Qualified Domestic Institutional Investors scheme pursuant to applicable rules and regulations and is for information purpose only. This document does not constitute a public offer by virtue of Act Number 26.831 of the Argentine Republic and General Resolution No. 622/2013 of the NSC. This communication's sole purpose is to inform and does not under any circumstance constitute promotion or publicity of Allianz Global Investors products and/or services in Colombia or to Colombian residents pursuant to part 4 of Decree 2555 of 2010. This communication does not in any way aim to directly or indirectly initiate the purchase of a product or the provision of a service offered by Allianz Global Investors. Via reception of his document, each resident in Colombia acknowledges and accepts to have contacted Allianz Global Investors via their own initiative and that the communication under no circumstances does not arise from any promotional or marketing activities carried out by Allianz Global Investors. Colombian residents accept that accessing any type of social network page of Allianz Global Investors is done under their own responsibility and initiative and are aware that they may access specific information on the products and services of Allianz Global Investors. This communication is strictly private and confidential and may not be reproduced. This communication does not constitute a public offer of securities in Colombia pursuant to the public offer regulation set forth in Decree 2555 of 2010. This communication and the information provided herein should not be considered a solicitation or an offer by Allianz Global Investors or its affiliates to provide any financial products in Brazil, Panama, Peru, and Uruguay. In Australia, this material is presented by Allianz Global Investors Asia Pacific Limited ("AllianzGI AP") and is intended for the use of investment consultants and other institutional/professional investors only, and is not directed to the public or individual retail investors. AllianzGI AP is not licensed to provide financial services to retail clients in Australia. AllianzGI AP is exempt from the requirement to hold an Australian Foreign Financial Service License under the Corporations Act 2001 (Cth) pursuant to ASIC Class Order (CO 03/1103) with respect to the provision of financial services to wholesale clients only. AllianzGI AP is licensed and regulated by Hong Kong Securities and Futures Commission under Hong Kong laws, which differ from Australian laws.

This document is being distributed by the following Allianz Global Investors companies:

Allianz Global Investors GmbH, an investment company in Germany, authorized by the German Bundesanstalt für Finanzdienstleistungsaufsicht (BaFin); Allianz Global Investors (Schweiz) AG; in HK, by Allianz Global Investors Asia Pacific Ltd., licensed by the Hong Kong Securities and Futures Commission; in Singapore, by Allianz Global Investors Singapore Ltd., regulated by the Monetary Authority of Singapore [Company Registration No. 199907169Z]; in Japan, by Allianz Global Investors Japan Co., Ltd., registered in Japan as a Financial Instruments Business Operator [Registered No. The Director of Kanto Local Finance Bureau (Financial Instruments Business Operator), No. 424], Member of Japan Investment Advisers Association, the Investment Trust Association, Japan and Type II Financial Instruments Firms Association; in Taiwan, by Allianz Global Investors Taiwan Ltd., licensed by Financial Supervisory Commission in Taiwan; and in Indonesia, by PT. Allianz Global Investors Asset Management Indonesia licensed by Indonesia Financial Services Authority (OJK).